

Changzhou Mateng Machinery

3 POINT HITCH WOOD CHIPPER BX42S,BX62S,BX62R OPERATION MANUAL



Enjoy your farming life.

6.SPECIFICATIONS

Drive System:	Direct drive. Pto w/ shearbolt	Direct drive. Pto w/shearbolt
Engine:	n/a	n/a
Chipper capacity:	4" diameter. (takes up to 10" slab)	6" diameter. (takes up to 12" slab)
Chipper housing opening :	4"×10"	6 1/2"×10"
Rotor size:	25"	30"
Rotor knives number:	4	4
Knife type:	Hardened tool steel	Hardened tool steel
Rotor weight:	110lbs	180lbs
Feeding system :	Self (BX42S)or hydraulic(BX42R)	Self (BX62S)or hydraulic(BX62R)
Dimensions(hopper folded):	40"L×42"×60" H	50"L×52"×74" H
Hopper opening :	20"×20"	25"×25"
Discharge chute rotation:	360	360
Discharge chute height :	60"	74"
Rated RPM:	540-1000	540-1000
Weight :	BX42S-190KGS	BX62S-360KGS/BX62R-430KGS

7.Exploded drawings and Part list for BX42S/BX62S/BX62R

1. BX42S drawing and partlist

BX42S exploded drawings

BX42S partlist

2. BX62S

BX62S.001 Assembly

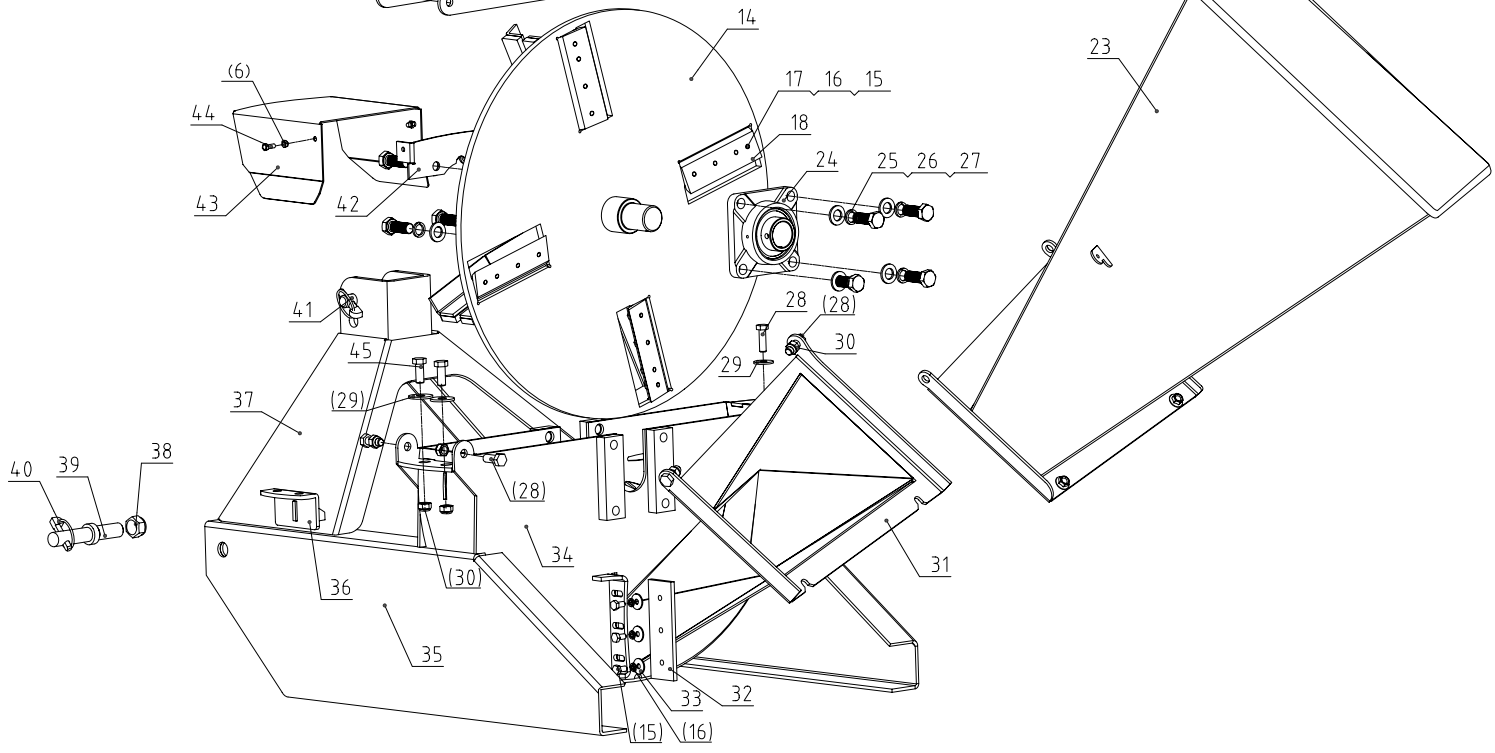
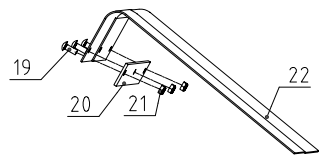
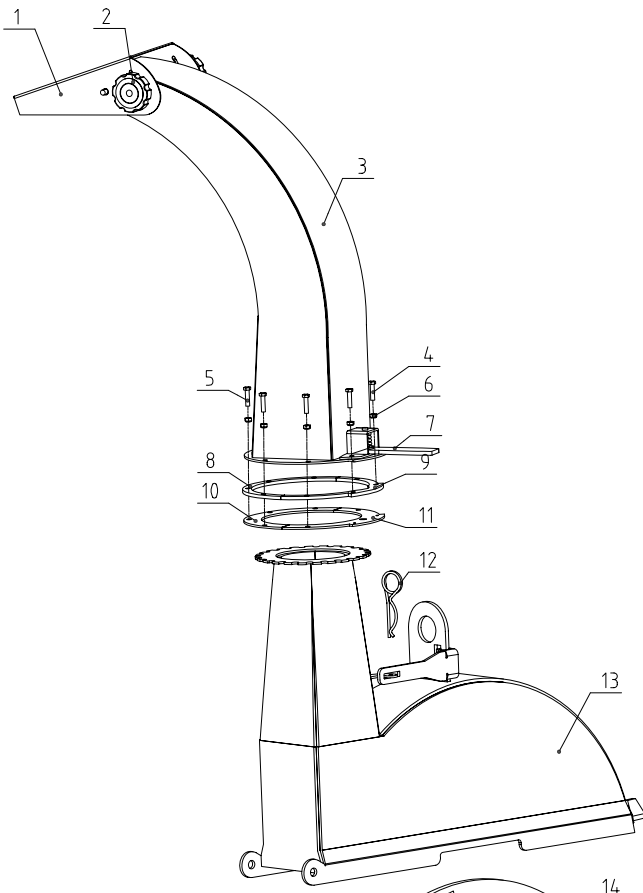
BX62S.002 Assembly

3. BX62R

BX62R.001 Assembly

BX62R.002 Assembly

BX62R.003 Assembly

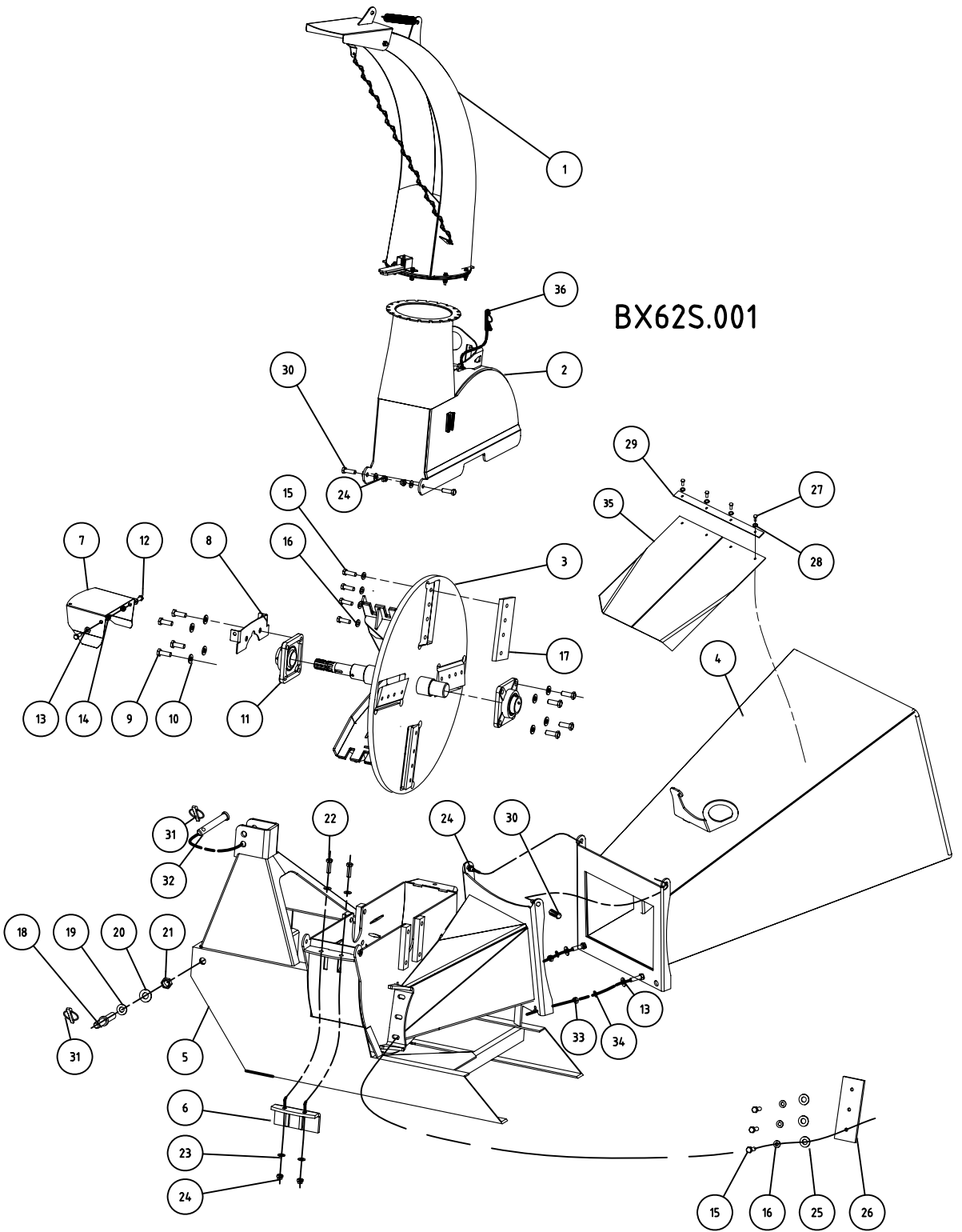


BX42S Partlist

Ser. No	Part no.	Part name	Qty
1	BX42S.103	Discharge cover	1
2	BX42S.114	Handles Nuts	2
3	BX42S.016	Discharge chute	1
4	HBF6A25	Bolt M6 * 25	2
5	HBF6A20	Bolt M6 * 20	6
6	NN6	Locknut M6	10
7	BX42S.018	Lock bracket weldment	1
8	BX42S.112	Partition (upper)	1
9	BX42S.113	Partitions (lower)	1
10	BX42S.110	Splint (upper)	1
11	BX42S.111	Splint (lower)	1
12	RP4	R pin Φ 4	1
13	BX42S.013	Upper cover weldment	1
14	BX42S.015	Blade wheel weldment	1
15	HBF8A20A1	Bolt M8 * 20 * 1	16
16	SW8	Shells pad Φ 8	19
17	PW8	Flat pad Φ 8	16
18	BX42S.105	Fly Blade	4
19	FCS8A20	Neck bolts M8 * 20	3
20	BX42S.106	Rubber platen	1
21	NN8	Locknut M8	8
22	BX42S.108	Rubber baffle	2
23	BX42S.011	Hopper weldment	1
24	BUCF208	UCF208 bearing	2
25	PW14	Flat washer Φ 14	8
26	SW14	Spring washer 14	8
27	HBF14A40	Bolt M14 * 40	8
28	HBF12A30	Bolt M12 * 30	5
29	PW12	Flat washer Φ 12	3
30	NN12	Locknut M12	6
31	BX42S.012	Feeding inlet weldment	1
32	BX42S.104	Fixed knife	1
33	PW8A24A2	Ohira pad Φ 8 * 24 * 2	3

34	BX42S.020	lower cover weldment	1
35	BX42S.014	Base weldment	1
36	BX42S.017	Side Blade weldment	1
37	BX42S.019	Hanging weldment	1
38	NN22	Locknut M22	2
39	EFH175.105	Lower suspension pin	2
40	SP11	Latch assembly Φ 11	3
41	BX42S.109	Upper suspension pin	1
42	BX42S.101	Bracket	1
43	BX42S.102	Hoods	1
44	HBF16A16	Bolt M6 * 16	2
45	HBF12A35	Bolt M12 * 35	2

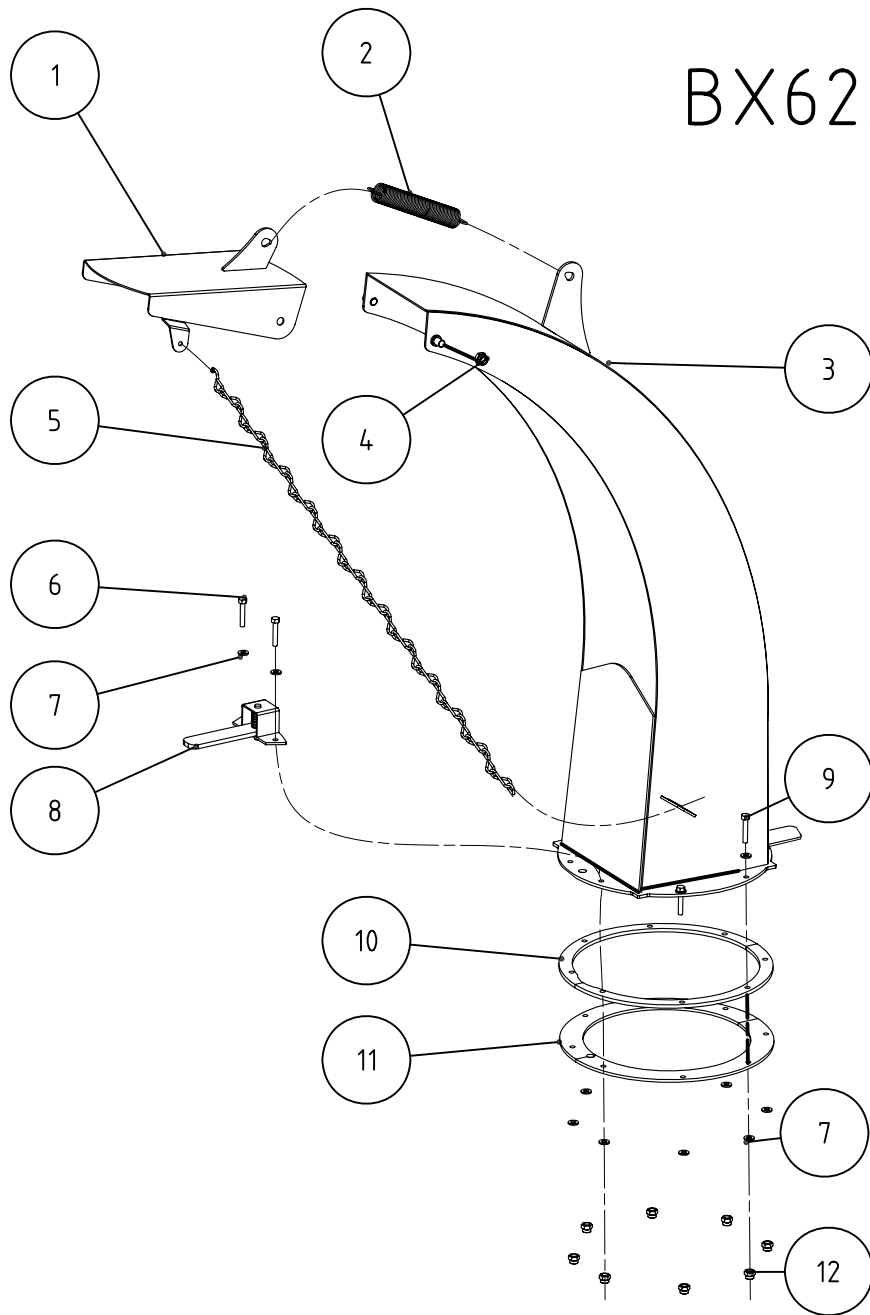
BX62S.001



BX62S Assembly

Ser.No.	Part No.	Name & Specification	Qty
1	BX62.002	Discharge pipe components	1
2	BX62.012	Shell-on weldment	1
3	BX62.013	Cutter weldment	1
4	BX62S.017	Hopper assembly	1
5	BX62S.011	Base weldment	1
6	BX62.014	Side knife weldment	1
7	BX62.102	PTO cover	1
8	BX62.101	Bracket	1
9	HBF14A1.25A45	Bolts M14 * 1.25 * 45	8
10	PW14	Washer 14	4
11	BUCF210	UCF210 bearing seat	2
12	HBF10A25	The M10 * 25	2
13	PW10	Washer 10	2
14	NN10	Locking nut 10	2
15	HBF12A1.25A30	bolts M12 * 1.25 * 30	16
16	SW12	Spring Washer 12	16
17	BX62.103	Movable Knife	4
18	EFH175.105	Lower pin	2
19	SW22	Spring Washer 22	2
20	PW22	Washer 22	2
21	HN22	Hex nuts 22	2
22	HBF12A1.25A35	Bolt M12 * 1.25 * 35	2
23	PW12	Washer 12	2
24	NN12	Locking nut M12	4
25	PW12A3	washer 12 * 3	3
26	BX62.104	Fixed knife	1
27	HBF6A15	Bolt M6 * 15	4
28	PW6	Washer	4
29	BX62.109	Layer	1
30	HBF12A35	Bolt M12 * 35	4
31	SP11	Lock pin 11	3
32	BX42.101	Upper pin	1
33	HN10	Hex nuts 10	2
34	SW10	Spring washer 10	2
35	BX62.108	Rubber baffle	2
36	RP4	R pin4	1

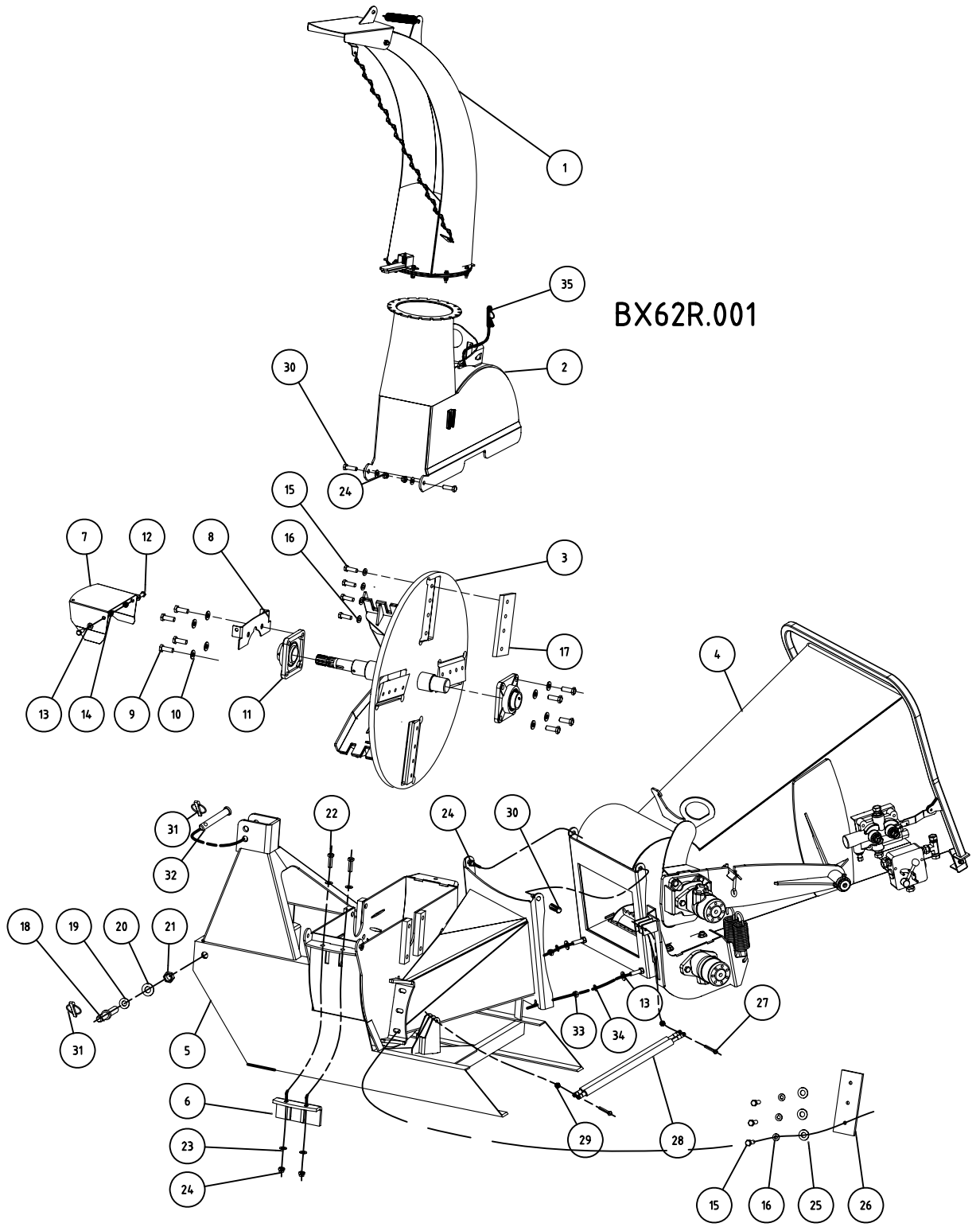
BX62.002



BX62.002 Assembly

Ser.No.	Part No.	Name & Specification	Quantity
1	BX62.015	Shield weldment	1
2	BX62.117	Extension Spring 1	1
3	BX62.016	Discharge pipe weldment	1
4	GX10	Cap nuts 10	2
5	BX62.118	Chain components	1
6	HBF6A35	Bolt M6, * 35	2
7	PW6	Washer 6	16
8	20182	Lock seat weldment	1
9	HBF6A30	Bolt M6, * 30	6
10	BX62.115	Middle Septa	2
11	BX62.116	Lower Septa	2
12	NN6	Locking nut M6	8

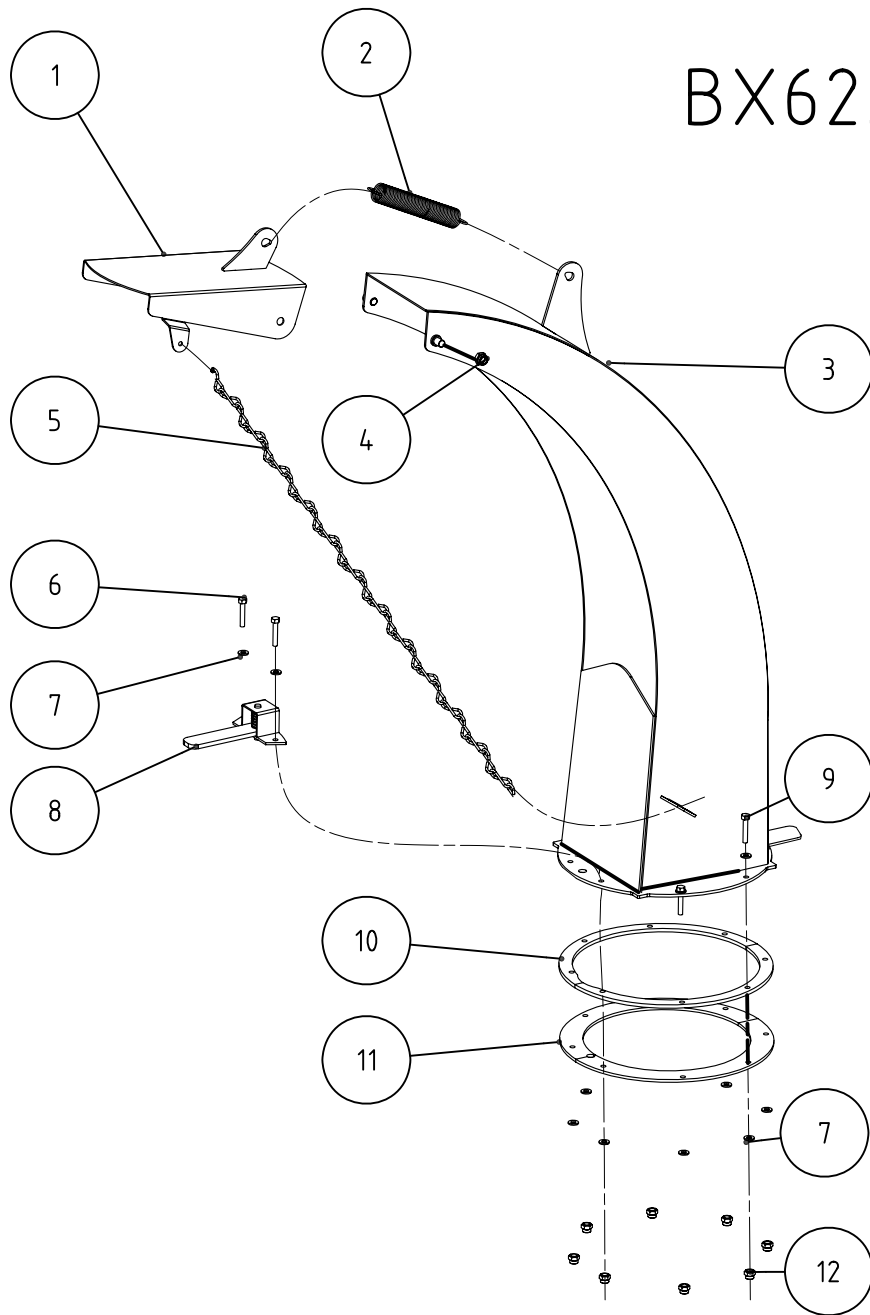
BX62R.001



BX62R.001 Assembly

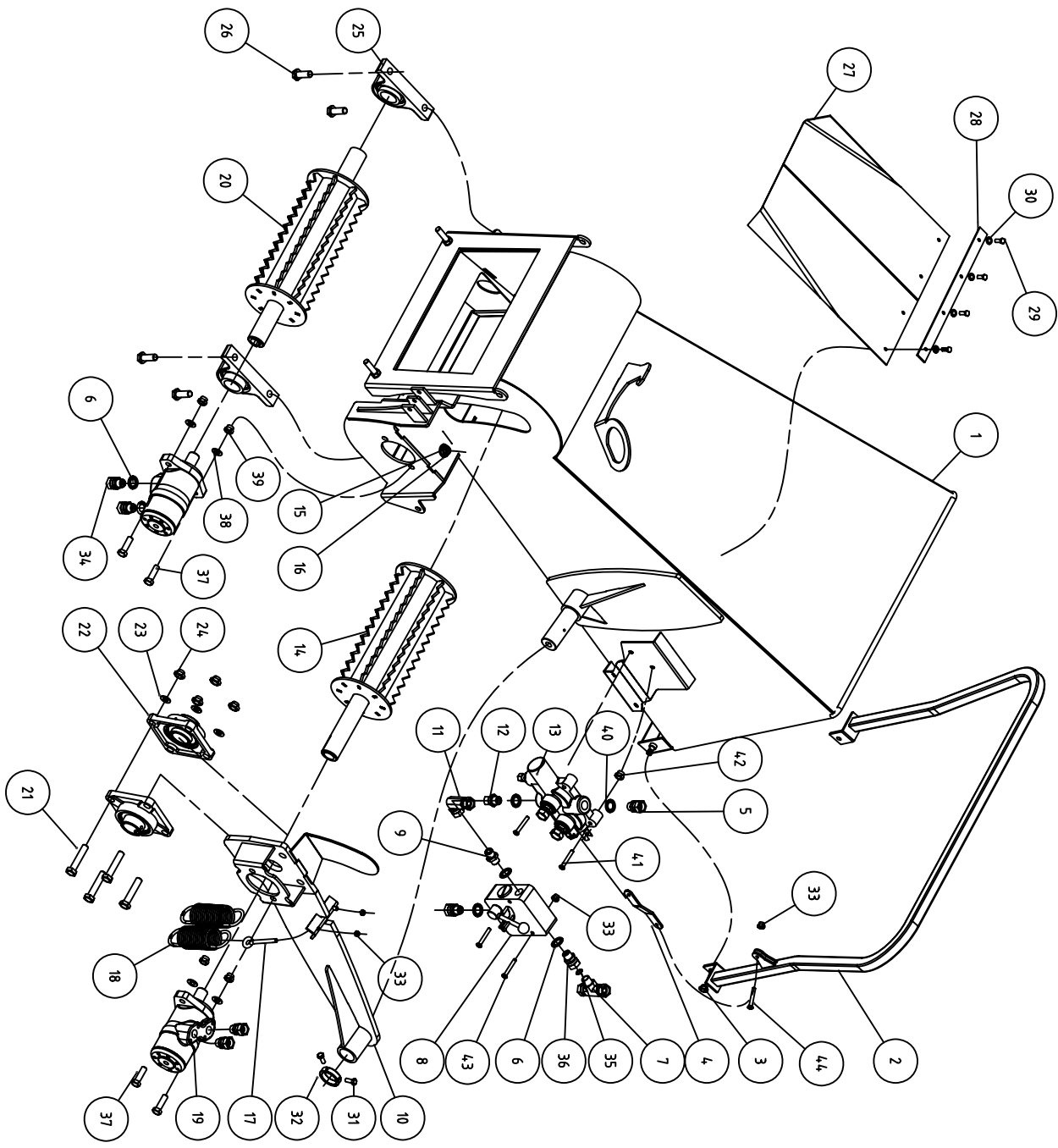
Ser.No.	Part No.	Name & Specification	Qty
1	BX62.002	Discharge pipe components	1
2	BX62.012	Shell-on weldment	1
3	BX62.013	Cutter weldment	1
4	BX62R.003	Hopper assembly	1
5	BX62.011	Base weldment	1
6	BX62.014	Side knife weldment	1
7	BX62.102	PTO cover	1
8	BX62.101	Bracket	1
9	HBF14A1.25A45	Bolts M14 * 1.25 * 45	8
10	PW14	Washer 14	4
11	BUCF210	UCF210 bearing seat	2
12	HBF10A25	The M10 * 25	2
13	PW10	Flat pad 10	2
14	NN10	Locknut 10	2
15	HBF12A1.25A30	bolts M12 * 1.25 * 30	16
16	SW12	Spring Washer 12	16
17	BX62.103	Movable Knife	4
18	EFH175.105	Lower pin	2
19	SW22	Spring Washer 22	2
20	PW22	Washer 22	2
21	HN22	Hex nuts 22	2
22	HBF12A1.25A35	Bolt M12 * 1.25 * 35	2
23	PW12	Washer 12	2
24	NN12	Locking nut M12	4
25	PW12A3	washer 12 * 3	3
26	BX62.104	Fixed knife	1
27	HBF8A65	Bolt M8 * 65	2
28	BX62.120	Pneumatic spring	2
29	NN8	Locking nut M8	2
30	HBF12A35	Bolt M12 * 35	4
31	SP11	Lock pin 11	3
32	BX42.101	Upper pon	1
33	HN10	Hex nuts 10	2
34	SW10	Spring washer 10	2
35	RP4	R pin 4	1

BX62.002



BX62.002 Assembly

Ser.No.	Part No.	Name & Specification	Qty
1	BX62.015	Shield weldment	1
2	BX62.117	Extension Spring 1	1
3	BX62.016	Discharge pipe welding	1
4	GX10	Cap nuts 10	2
5	BX62.118	Chain components	1
6	HBF6A35	Bolt M6, * 35	2
7	PW6	Washer 6	16
8	20182	Lock seat weldment	1
9	HBF6A30	Bolt M6, * 30	6
10	BX62.115	Middle Septa	2
11	BX62.116	Lower Septa	2
12	NN6	Locking nut M6	8



BX62R.003

BX62R.003 Assembly

Ser.No.	Part No.	Name & Specification	Qty
1	BX62.017	Hopper weldment	1
2	BX62.018	Feed handle weldment	1
3	NN10	Locking nut M10	2
4	BX62.110	Feed handle connecting plate	1
5	BX62.305	Switch Valve straight connector	3
6	BWG1/2	Combination washer G1 / 2	7
7	BX62.307	Tees	1
8	BX62.312	Control valve assembly	1
9	BX62.301	Control valve straight connector	1
10	BX62.021	Pendulum shaft welding	1
11	BX62.306	Control valve fittings	1
12	BX62.302	M18 connector	1
13	BX62.313	Switch Valve	1
14	BX62.019	Upper roller weldment	1
15	NN16	Locking nut M16	4
16	PW16	Washer 16	4
17	BX62.113	Hook-type screw	2
18	BX62.112	Extension Spring 2	2
19	BX62.314	Hydraulic motor	2
20	BX62.020	Lower Roller weldment	1
21	HBF14A70	Bolt M14X70	4
22	B UCF208	B UCF208 bearing	2
23	PW14	washer 14	4
24	NN14	Locking nut M14	4
25	B UCP208	B UCP208 bearing	2
26	HBF16A50	Bolt M16X50	4
27	BX62.108	Rubber baffle	2
28	BX62.109	Layer	1
29	HBF6A15	Bolt M6 * 15	4
30	PW6	Washer 6	4
31	HBF6A10	Bolt M6X10	2
32	BX62.111	Block sets	1
33	NN6	Locking nut 6	5
34	BX62.303	Motor straight connector	5

BX62R.003 Assembly

Ser.No.	Part No.	Name & Specification	Qty
35	OR10A2.5	O-ring (inner diameter * 2.5)	1
36	BX62.304	Valve straight connector	1
37	HBF12A45	Bolt M12X45	4
38	PW12	Washer 12	4
39	NN12	Locking nut M12	4
40	BW18	Combination washer 18	4
41	HBF8A65	Bolt M8 * 65	2
42	NN8	Locking nuts M8	2
43	HBF6A65	Bolt M6, * 65	2
44	HBF6A25	Bolt M6 * 25	1